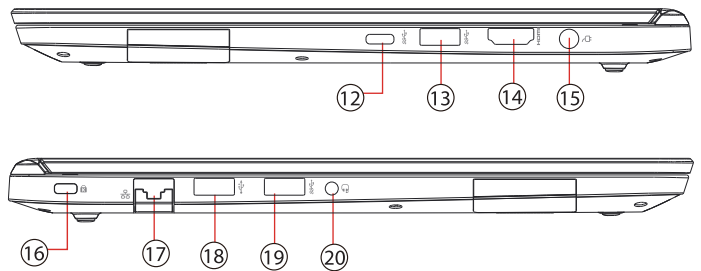
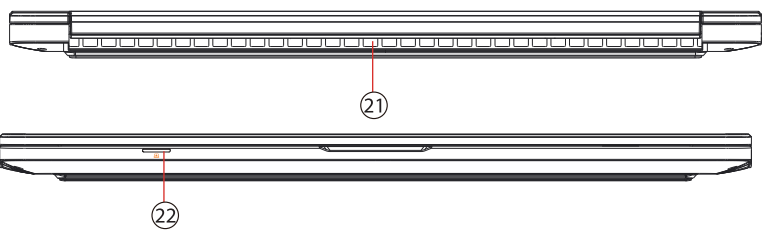
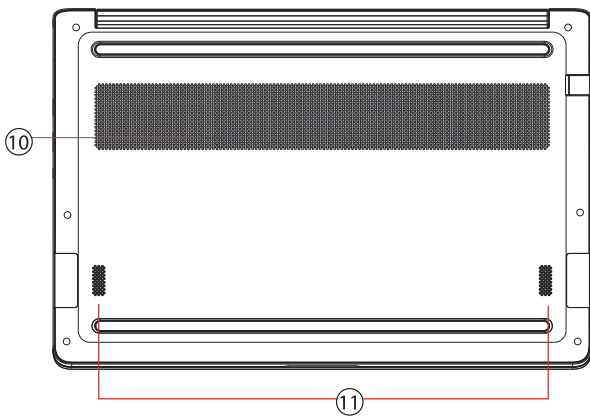


- 1- Camera status led
- 2- Camera ○ or Infrared capability for Facial recognition camera ●
- 3- Microphone
- 4- LCD screen
- 5- Power button
- 6- Charging & Battery indicator ○ ⚡
- 7- Keyboard
- 8- Caps lock status led ○
- 9- Touchpad/Click pad
Touchpad led indicator/ Touchpad switch



- 12- USB port (USB Type C)
- 13- USB port
- 14- HDMI port
- 15- Power connector
- 16- Kensington® lock port
- 17- Network jack
- 18- USB port
- 19- USB port
- 20- Audio out jack

* Click twice left corner will open or close (White light) touchpad functionality

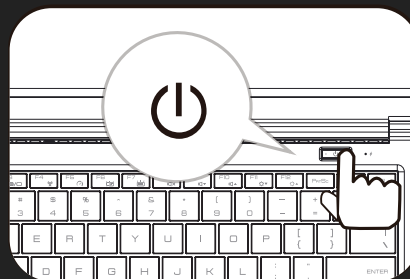
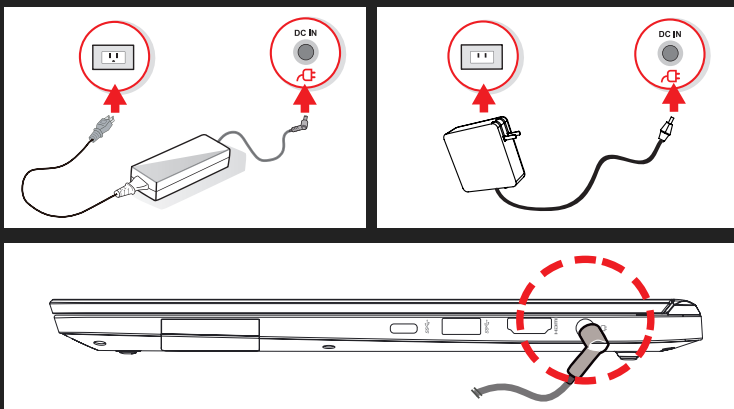


- 10- Vents
- 11- Speaker

- 21- Vents
- 22- Card reader(Optional)

Starting

* Please note: The AC adapter included with your PC was specifically designed & approved for your model. Utilization of an after-market may damage either the notebook or other devices connected to it. If damage is determined to have been caused by utilization of an unauthorized power supply, it will not be protected under warranty.



FCC PART 15 DISCLAIMER:
This device complies with part 15 of the FCC rules and industry Canada license-exempt RSS standard(s). Operation is subject to the following two conditions: (1) this device may not cause harmful interference, and (2) this device must accept any interference received, including interference that may cause undesired operation.

MOTILE™

**Quick
Start
Guide**
(M141 & M142)

*To view the User Manual, please
visit www.walmart.com/motile*